

MARCH 2025

# *In the Knoll*

YOUR COMMUNITY NEWSLETTER



## Windward Knoll

12415 Thonotosassa Rd.

Thonotosassa, FL 33592

813-986-2525

[windwardknoll@steinercommunities.com](mailto:windwardknoll@steinercommunities.com)

Like us on Facebook:

Windward Knoll Residents Page

### **Office Hours:**

Monday-Friday: 9am - 5pm

Saturday: 9am - 11am

Sunday: Closed

### **Pool Hours:**

9am - Dusk

(Kid Hours: 11am-2pm)



# M<sup>♣</sup>RCH



Sun.	Mon.	Tues.	Wed.	Thurs.	Fri.	Sat.
						1  Breakfast 9-10am Social Club Meeting 10:30 am
2 	3	4 <i>Mardi Gras</i>	5  <i>Ash Wednesday</i>	6	7 	8
9	10	11 <b>SUPER BINGO</b>	12	13	14 	15  Breakfast 9-10am Social Club Meeting 10:30 am  St. Patrick's Day Celebration
16	17 	18	19 	20   Potluck Dinner 4pm	21 	22
23	24	25 	26	27	28   Dance Night 7pm	1  Breakfast 9-10am Social Club Meeting 10:30 am

# HAPPY BIRTHDAY

3/3 Cindy Bond	3/21 Joseph Huguenard Jr.
3/7 Karen Austin	3/23 Joy May
3/7 Linda Smith	3/28 Darlene Perry
3/11 Michael Tubbs	3/30 Paul Murray
3/11 Quinton Minus	3/31 Janis Robertson
3/15 Eddie Range	
3/19 James Ring	

## HAPPY ANNIVERSARY

3/17/1997 Steve & Marie Martin  
3/25/2006 Leonard & Charlotte Buckland



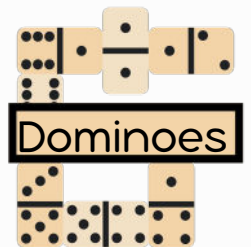
**When?**  
Tuesdays  
(see calendar)  
**Time?**  
6:30pm



**When?**  
Wednesdays  
(see calendar)  
**Time?**  
6:30pm



**When?**  
Thursdays  
(see calendar)  
**Time?**  
6pm



**When?**  
Fridays  
**Time?**  
1:30pm

JOIN US FOR A

# ST. PATRICK'S DAY PARTY

MARCH | 15 | 4:00 PM

2025

--PLEASE--

JOIN US FOR OUR ANNUAL  
ST. PATRICKS DAY CELEBRATION  
SANDWICHES, PRIZES, FUN

\$\$ WIN THE POT OF GOLD \$\$

-----BYOB-----

Windward Knoll Clubhouse  
12415 Thonotosassa Rd



*Music  
Dance*

*Party*



March | **28** | Friday  
2025 | 7:00 PM

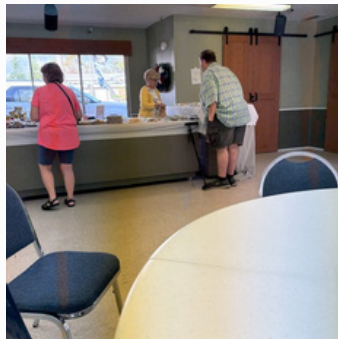
DJ- Joe/Roger  
At the Clubhouse

You're invited to our  
music party. Join us!  
BYOB





# WHATS HAPPENED AROUND THE *knoll*







# Super Bingo Night

Higher Jackpots

AT 6:30 PM

TUESDAY MARCH 11, 2025

@Clubhouse

Sandwiches- bring snack





# WHATS HAPPENED AROUND THE *knoll*





# FLORIDA STRAWBERRY FESTIVAL



**THE STAGE IS SET!**  
February 27 - March 9, 2025  
Plant City, Florida

# TASTE of SOUTH TAMPA

PRESENTED BY **OLDER & LUNDY & KOCH MARTINO**

**MARCH 2 2025**



**1:00-4:00PM | TAMPA GARDEN CLUB**  
[www.TasteofSouthTampa.com](http://www.TasteofSouthTampa.com)  
**SOUTH TAMPA CHAMBER**

# SPRING CRAFT & ARTISAN MARKET DAY

Presented by: **COMMUNITY Markets & Events LLC**

March 1st, 2025  
10 am to 2 pm

Sponsored by: **MARKET In The Mall**

**COUNTRYSIDE**  
27001 U.S. Hwy 19  
Clearwater, Florida 33761

# PADDY FESTE ST. PETE

At Williams Park  
Saturday, March 15th 2025

**A CELEBRATION OF ALL THINGS IRISH**  
brought to you by



# LINE DANCING

LESSONS IN THE BACKYARD



**WEEKLY ON THURSDAYS | 7 - 9 PM | FREE NO TICKET REQUIRED**  
AT KEEL FARMS

# RAYMOND JAMES STADIUM

03.15.25 | TAMPA BAY, FL





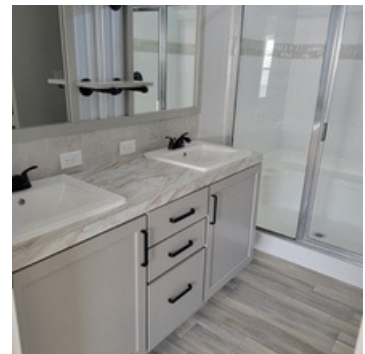
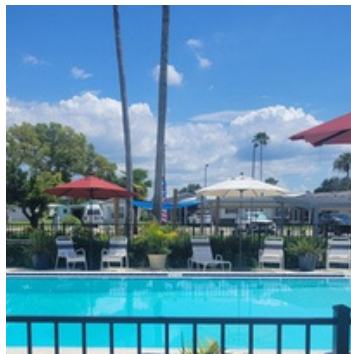
Pick up Your - \$ 5,000.00 Referral Voucher at the Office



— WINDWARD KNOLL —

# PARADISE

Palm Harbor 2/2 plus Den \$215,000.00



Join us in this Great Opportunity to Greet a New Neighbor and Earn \$5,000.00

*Please Come to the Office for More Information*

***\$5,000.00 Referral***



# Hello

## SPRING 2025



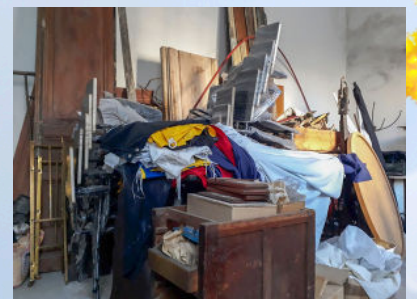
Spring is around the corner and grass is going to grow. It is time to get your lawn care in order



Please set a plan's for getting homes pressure washed. There is a flyer in the Newsletter for Elite Surface Cleaning. If you need assistance in getting your Home scheduled or Financial assistance please communicate with the Home Owners Association, the Social Club or the office



It's the American way, we all seem to accumulate things, things become clutter, take a good look at your carport and lanai, tidy and tighten up. You may love it but we don't need to see it



Thank you for Helping in Keeping Windward Knoll Beautiful for all to ENJOY !!!!!!!



\$50 referrals for roof cleaning  
\$20 referrals for house washings  
---YOUR NEXT SERVICE---



## Elite Surface Cleaning Plus

- Roof & Gutter Cleaning **\$275**
  - House Wash **\$225\*** Includes driveway
  - Driveway Cleaning **\$100**
  - Gutter Cleaning **\$100**
  - Lanai/Porch Cleaning **\$100**
- (\$200 minimum)**

The black streaks running down your roof are actually a hardy algae called *Gleocapsa magma*. As the blue-green algae accumulate, they develop a dark hardened outer coating which results in black stains you see. The algae feed on the limestone shingles and eat through them, causing roof damage if not cleaned properly in time.

The Green stuff on your siding is more than an eyesore. It is actually an airborne algae that can cause long-term damage to the surface. While it is not uncommon to see homes with an accumulation of green stuff, it is important to take care of it in a timely fashion.

**And more!** (Ask about military discounts!)

**Grab your neighbor and you both get 25% off**

Kevin Holt- (813)-520-3561 (call or text for free quotes)

**82elitesurfacecleaning@gmail.com**



# Household Hazardous Waste

## These Items Can be Taken to a Community Collection Center



Electronic equipment may contain lead, mercury and other toxic materials if it contains a digital display or circuit board. Please recycle your household electronic equipment (limit 5 per month), including:

- Computers
- Copiers
- Fax machines
- Laptops
- Monitors
- Printers
- Radios
- Scanners
- Stereo equipment
- Telephones/Cell phones
- Televisions
- VCR/DVD players



Paint is now also accepted at our Community Collection Centers. Limit ten 1-gal and five 5-gal containers. No aerosols or chemicals please.

## What Not to Bring to the HHW Facilities

- Biomedical waste (sharps, etc.)\*
- Business waste\* - Loads will be evaluated to determine if products are considered business waste
- Compressed gas cylinders (other than propane/helium in the size listed inside)
- Containers larger than 10 gallons
- Electronics (accepted at the Community Collection Centers)
- Empty containers (may be discarded in the trash)
- Medications\*

\* Visit [HCFLGov.net/HHW](http://HCFLGov.net/HHW) for safe disposal options for these types of waste.

## Household Hazardous Waste Program

(813) 272-5680

Email: [PUD-SpecialWaste@HillsboroughCounty.org](mailto:PUD-SpecialWaste@HillsboroughCounty.org)

### HHW Facility Locations

Open select Saturdays of the month  
Bring photo ID  
8 a.m. to 2 p.m.\*

Sheldon Road	South County	East County
1st Saturday of each month	2nd Saturday of each month	3rd Saturday of each month
9805 Sheldon Rd. in Tampa	13000 US Hwy. 41 in Gibsonton	6209 CR 579 in Seffner

\* Facilities will close during times of severe weather, including lightning.

### Community Collection Centers (CCC)

Paint and Electronics Only  
Bring photo ID

Open Monday to Saturday  
7:30 a.m. to 5 p.m.

- Alderman Ford CCC  
9402 SR 39 in Lithia
- Hillsborough Heights CCC  
6209 CR 579 in Seffner
- Northwest County CCC  
8001 W. Linebaugh Ave. in Tampa
- South County CCC  
13000 US Hwy. 41 in Gibsonton
- Wimauma CCC  
16180 West Lake Drive in Wimauma

Property tax bill with Solid Waste Assessment fee still required for other items such as appliances, tires and furniture.



## What is Household Hazardous Waste?

Household hazardous wastes (HHW) are products that contain ingredients that are toxic, flammable, corrosive or reactive. These include pool chemicals, paint thinner, pesticides, fluorescent lamps, car batteries and other items listed in this brochure.

## Proper Disposal of HHW

If disposed of improperly, these products can be harmful to humans, wildlife and the environment. They should never be thrown in the trash, poured down the drain, storm sewers or on the ground. Never leave hazardous products within the reach of children or pets.

## Minimize HHW

- Buy products in smaller sizes with less or no harmful ingredients.
- Use the products only for their intended purpose following the instructions on the label.
- **REDUCE** waste by purchasing only the amount needed to do the job.
- **REUSE** products by donating unused portions of common items to friends, family or community organizations.
- **RECYCLE** by taking unwanted or expired products to the Household Hazardous Waste Collections (see facility locations).



A service to all residents of Hillsborough County.

# East County

# 3rd Saturday of each Month

# 6209 CR 579 in Seffner

# Household Hazardous Waste

## What to Bring to the HHW Facilities

Products containing hazardous ingredients and are labeled with words such as poison, danger, toxic, flammable, corrosive and reactive. The following are examples of accepted materials.

2



### 2. Paint Products Paint/Stains

Limit ten 1-gal. and five 5-gal. containers.

- Stain
- Solvents

1



### 1. Household Products

- Adhesives
- Aerosols
- Cleaners
- Drain openers
- Pest control
- Solvents

3



### 3. Mercury Lamps & Devices

Limit 10

- Compact fluorescent lamps (CFLs)
- Fluorescent lamps
- Mercury thermometers
- Mercury thermostats

4



### 4. Yard Products

- Fertilizers
- Herbicides
- Pesticides
- Poisons

8



### 8. Pool & Spa Products

- Pool/Spa chemicals
- Pool/Spa cleaners

6



### 6. Personal Care Products

- Nail polish remover
- Peroxides
- Rubbing alcohol

### 5. Auto Products

- Antifreeze
- Diesel
- Gasoline
- Motor oil
- Waxes, cleaners and polishes

5



9



### 9. Batteries Auto/Marine

- Lead-acid
- Rechargeable Ni-Cd, Li-Ion, Ni-MH, Lithium (NOTE: Single-use alkaline batteries (AA, C, D) may be discarded in the regular trash.)

### 10. Propane/Helium Tanks

- Propane Tanks 30 lb. or less Limit 5
- Helium Tanks 20 lb. or less
- Fire Extinguishers

10



### Safe Transportation of HHW

- Do not mix chemicals together.
- Do not smoke around chemicals.
- Keep chemicals in original containers with label intact, if possible. If product is missing original label, mark it yourself if you are sure of the contents.
- If a chemical leaks, secure it in a secondary leak-proof container or clear plastic bag.
- Package chemicals securely in non-leaking containers or boxes. Do not combine all of your chemicals in a trash bag. This could cause a fire or chemical reaction.
- During transport, place the container in a well ventilated space away from the driver and passengers, such as a trunk or bed of vehicle.

7



### 7. Ammunition, Fireworks and Flares

## Reminder of what "CANNOT" Go into our 8 Yard Household Trash Containers

Furniture (of any kind), Electronics, Paint, Hazardous Waste, Batteries, Fertilizer, Pesticides, Vacuum Cleaners.....Use the above information on where you can take these items