

APRIL 2025

In the Knoll

YOUR COMMUNITY NEWSLETTER



Windward Knoll

12415 Thonotosassa Rd.

Thonotosassa, FL 33592

813-986-2525

windwardknoll@steinercommunities.com

Like us on Facebook:

Windward Knoll Residents Page

Office Hours:

Monday-Friday: 9am - 5pm

Saturday: 9am - 11am

Sunday: Closed

Pool Hours:

9am - Dusk

(Kid Hours: 11am-2pm)



April



Sun.	Mon.	Tues.	Wed.	Thurs.	Fri.	Sat.
		1 	2 	3	4 	5  Easter Dinner 4pm
6	7	8 	9	10 	11 	12
13  PALM SUNDAY	14	15  TAX DAY	16 	17	18  <i>Good Friday</i>	19
20  Happy Easter	21	22   EARTH DAY	23	24 	25 	26
27	28	29	30	APRIL SHOWERS <i>Bring</i> MAY FLOWERS 		

HAPPY
BIRTHDAY

- | | | |
|----------------------|------------------------|-------------------------------|
| 4/1 Francis Fahs | 4/8 Marie Martin | 4/14 Sherry Christian |
| 4/2 Mary Samara | 4/8 Earl McGinnis | 4/14 Mary Martin |
| 4/4 Christopher Malz | 4/9 Barbara Batchelder | 4/18 Beatrice "Irene" Merrill |
| 4/5 Michael Kasko | 4/9 Ethel Goebel | 4/24 Anna DelloRusso |
| 4/6 Pat Almond | 4/9 Sheila Rickards | 4/25 Donald Goebel Sr. |
| 4/6 Rebecca Frye | 4/9 Jane Uhrig | 4/25 Linda Petrus |
| 4/6 Susan Marks | 4/11 Mary Rodriguez | 4/26 Gary McCormick |

Happy Anniversary 

- 4/5/1980 Ed & Sandy Van Etten
4/18/1987 Joe & Lisa Huguenard



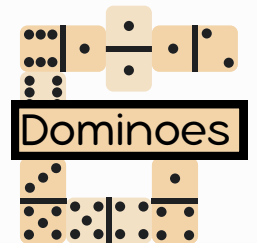
When?
Tuesdays
(see calendar)
Time?
6:30pm



When?
Wednesdays
(see calendar)
Time?
6:30pm



When?
Thursdays
(see calendar)
Time?
6:30pm



When?
Fridays
Time?
1pm



You're Invited to:

Windward Knoll's Annual Easter Dinner

Hosted by the Social Club

Date: Saturday, April 5

Time: 4:00pm

Dinner will include:

Ham - Mashed Potatoes - Roll

Drinks Provided:

Coffee - Tea - Lemonade

Please bring a dish to pass

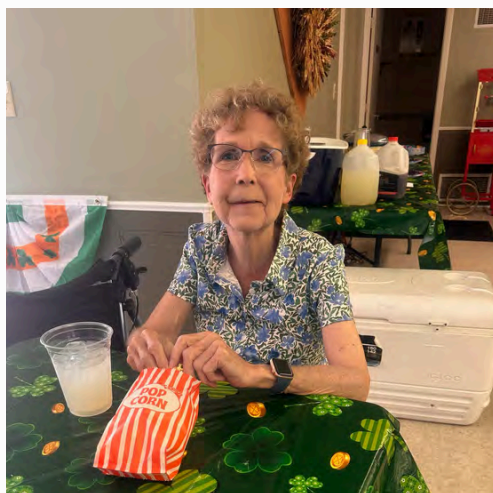
**Please sign up in the clubhouse if you plan on attending
so we can ensure enough food is purchased.**

We are also looking for volunteers to help with setup
Friday morning at 10am and cleanup. Sign up in the
clubhouse if interested.





What's Happened around the Knoll





What's happened around the Knoll





What's happened
around the Knoll



Hall Awaits 2025 Class

In August, the RV/MH Hall of Fame will celebrate the 2025 class of inductees, five from each industry.

“Our selection committees held meetings to review in detail all the nominations submitted for consideration of induction in the 2025 class of RV/MH Heritage Foundation’s Hall of Fame,” outgoing Hall of Fame President Darryl Searer said. “The committees were impressed with the number and quality of nominations.”

The following individuals have accepted the Hall of Fame’s invitation to attend the 53rd annual induction ceremony. The gala event will take place at the Heritage Foundation Museum and conference facility in Elkhart, Indiana, in August. 18.

Manufactured Housing Industry Inductees

Nelson Steiner – Florida-based Community Owner Steiner Communities



Nelson Steiner, who was nominated by Florida Manufactured Housing Association CEO Jim Ayotte, worked in the manufactured housing industry for more than five decades, leading Tampa’s Steiner Communities since the 1970s, starting with Fountain View Estates, a 546-homesite 55+ property. He also ran Park Place Housing Sales Centers and received MHI’s Community of the Year award in 2005 for Windward Knoll in Thonotosassa, Florida. He gave countless hours to state and national trade associations and was noted for “selfless contributions and strong character and charm” according to Ayotte’s nomination statement. “Nelson is a pure entrepreneur. To build a successful manufactured home community business from the ground up is a daunting challenge,” Murex Properties President Steve Adler said in support of Steiner’s nomination. “The developments that Nelson has built here in Florida were state of the art and continue to provide quality housing and lifestyles to many retired families.”

Hello

SPRING 2025



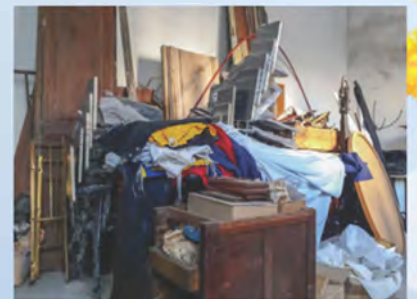
Spring is around the corner and grass is going to grow. It is time to get your lawn care in order



Please set a plan's for getting homes pressure washed. There is a flyer in the Newsletter for Elite Surface Cleaning. If you need assistance in getting your Home scheduled or Financial assistance please communicate with the Home Owners Association, the Social Club or the office



It's the American way, we all seem to accumulate things, things become clutter, take a good look at your carport and lanai, tidy and tighten up. You may love it but we don't need to see it



Thank you for Helping in Keeping Windward Knoll Beautiful for all to ENJOY 111111

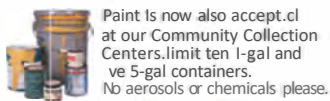
Household Hazardous Waste

These Items Can be Taken to a Community Collection Center



Electronic equipment may contain lead, mercury and other toxic materials if it contains a digital display or circuit board. Please recycle your household electronic equipment (limit 5 per month), including:

- Computers
- Copiers
- Fax machines
- Laptops
- Monitors
- Printers
- Radios
- Scanners
- Stereo equipment
- Telephones/Cell phones
- Televisions
- VCR/DVD players



Paint is now also accepted at our Community Collection Centers. Limit ten 1-gal and five 5-gal containers. No aerosols or chemicals please.

What Not to Bring to the HHW Facilities

- Biomedical waste (sharps, etc.)
- Business waste* • Loads will be evaluated to determine if products are considered business waste
- Compressed gas cylinders (other than propane/hellum in the size listed inside)
- Containers larger than 10 gallons
- Electronics (accepted at the Community Collection Centers)
- Empty containers (may be discarded in the trash)
- Medications

* Visit HCF.gov.net/HHW for safe disposal options for these types of waste.

Household Hazardous Waste Program (813) 272-5680

Email: PUDSpecialWaste@HillsboroughCounty.org

HHW Facility Locations

Open select Saturdays of the month
Bring photo ID
8 a.m. to 2 p.m. •

Sheldon Road	South County	East County
1st Saturday of each month 980S Sheldon Rd. in Tampa	2nd Saturday of each month 13000 US Hwy. 41 in Gibsonton	3rd Saturday of each month 6209 CR 5111 in Seffner

* Facilities will allow dumping of paint, oil, grease, motor oil, antifreeze, and household hazardous waste.

Community Collection Centers (CCC)

Paint and Electronics Only
Bring photo ID

Open Monday to Saturday
7:30 a.m. to 5 p.m.

- Alderman Ford CCC
9402 SR 39 in Lithia
- Hillsborough Heights CCC
6209 CR 579 in Seffner
- Northwest County CCC
8001 W. Linebaugh Ave. in Tampa
- South County CCC
13000 US Hwy. 41 in Gibsonton
- Wimauma CCC
16180 West Lake Drive in Wimauma

Priority tax bill with Solid Waste Management Fee (HWLF) included for other HHW such as auto parts, tires and furniture.



What is Household Hazardous Waste?

Household hazardous wastes (HHW) are products that contain ingredients that are toxic, flammable, corrosive or reactive. These include pool chemicals, paint thinner, pesticides, fluorescent lamps, car batteries and other items listed in this brochure.

Proper Disposal of HHW

If disposed of improperly, these products can be harmful to humans, wildlife and the environment. They should never be thrown in lawn trash, poured down the drain, storm sewers or into the ground. Never leave hazardous products within the reach of children or pets.

Minimize HHW

- Buy products in smaller sizes with less or no harmful ingredients.
- Use the products only for their intended purpose following the instructions on the label.
- **REDUCE** waste by purchasing only the amount needed to do the job.
- **REUSE** products by donating unused portions of common items to friends, family or community organizations.
- **RECYCLE** by taking unwanted or expired products to the Household Hazardous Waste Collections (see facility location).



A service to all residents of Hillsborough County.

East County 3rd Saturday of each Month 6209 CR 579 in Seffner

Household Hazardous Waste

What to Bring to the HHW Facilities

Products containing hazardous ingredients and are labeled with words such as poison, danger, toxic,ammable, corrosive and reactive. The following are examples of accepted materials.



- 2. Paint Products Paint/Stains**
Limit ten 1-gal. and five 5-gal. containers.
- Stain
 - Solvents



- 1. Household Products**
- Adhesives
 - Aerosols
 - Cleaners
 - Drain opener, Pest control
 - Solvents



- 3. Mercury Lamps & Devices**
Limit 10
- Compact fluorescent lamps (CFLs)
 - Fluorescent lamps
 - Mercury thermostats



- 4. Yard Products**
- Fertilizers
 - Herbicides
 - Pesticides
 - Poisons



- 6. Personal Care Products**
- Nail polish remover
 - Peroxides
 - Rubbing alcohol



- 5. Auto Products**
- Antifreeze
 - Diesel
 - Gasoline
 - Moto, oil
 - Waxes, cleaners and polishes



- 8. Pool & Spa Products**
- Pool/Spa chemicals
 - Pool/Spa cleaners



- 7. Ammunition, Fireworks and Flares**



- 9. Batteries Auto/Marine**
- Lead-acid
 - Rechargeable-cd, Li-Ion, NiMH, Uthium)cm, 91t-),-il b,lntrifis(M,C,D)bt Orack: n 1p 19ull tM.
- 10. Propane/Helium Tanks**
Propane Tanks 30 lb. or less limit 5
Helium Tanks 20 lb. or less
Fire Extinguishers



Safe Transportation of HHW

- Do not mix chemicals together.
- Do not smoke around chemicals.
- Keep chemicals in original containers with label intact, if possible. If product is missing original label, mark it yourself if you are sure of the contents.
- If a chemical leaks, secure it in a secondary leak-proof container or clear plastic bag.
- Package chemicals securely in non-leaking containers or boxes. Do not combine all of your chemicals in a trash bag. This could cause a fire or chemtrail reaction.
- During transport, place the container in a well ventilated space away from the driver and passengers, such as a trunk or bed of vehicle.

Reminder of what "CANNOT" Go into our 8 Yard Household Trash Containers
Furniture (of any kind), Electronics, Paint Hazardous Waste, Batteries, Fertilizer, Pesticides Vacuum CleanersUse the above information on where you can take these items

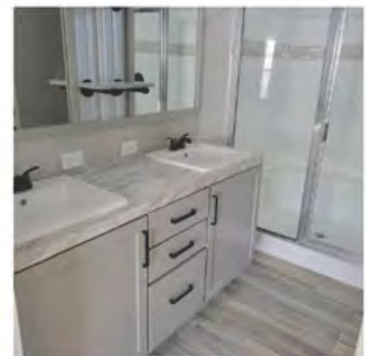
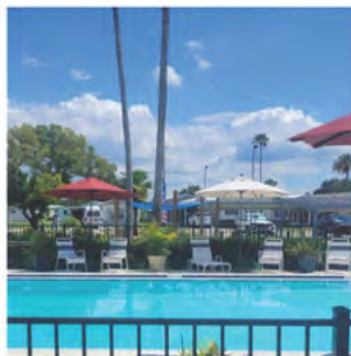
Pick up Your - \$5,000.00 Referral Voucher at the Office



WINDWARD KNOLL

PARADISE

Palm Harbor 2/2 plus Den \$215,000.00



Join us in this Great Opportunity to Greet a New Neighbor and Earn \$5,000.00

Please Come to the Office for More Information

\$5,000.00 Referral



MONARCH BUTTERFLY FESTIVAL

Saturday
April 5, 2025
10 am to 4 pm
Touchton Park & Dade City Garden Club

Sponsored by
The City of Dade City &
The Dade City Garden Club



Flowers, Bees, and Butterflies

Blooms a Bees--The Buzz In the Garden
Flower show | Plant sale, vendor Market.
Kids' Zone, Live Butterflies a More!

More information: dgcmonarch@gmail.com



UNCDANCE

LESSONS IN THE BACKYARD



WtTKLY ON | 7 - 9 PM | 110 J1 NETICK T
TJ.JUR_S DAYS | ATKE LFARMS | t JV.bb R.OUIR.D

Blueberry Festival

Sat & Sun in April (Closed Easter Sunday) | 10 am - 3 pm

Join us on the farm for a weekend full of family friendly fun, local vendors, farm-fresh wine & ciders & all THINGS BLUEBERRIES!

FREE Admission & \$10 Parking

Blueberry U-Pick | Camel Rides | Petting Zoo
Kid Zones | Blueberry Shortcake Eating Contests
Local vendors | Seasonal Wine & Cider Releases



EASTER

at Old McMicky's Farm
April 12th | 9AM - 1PM

PETTING FARM | EASTER BUNNY | FACE PAINTING | EGG HUNTS

FAMILY PHOTO OPS & MORE!

Coachman Park's EASTER EGGSTRAVAGANZA

Clearwater's LARGEST Easter Egg Drop!

**SATURDAY
APRIL 12TH**

10AM - 2 PM

COACHMAN PARK
300 CLEVELAND ST.
CLEARWATER, FL 33755
WWW.TMARKETCULTURE.COM

- 8,000+ EASTER EGGS
- 2 EPIC EGG DROPS ON THE CREEK - 10:30 AM & 12:30 PM
- EASTER BUNNY PHOTO OP
- PLAY WITH ADORABLE BUNNIES
- KID'S CRAFT AREA!
- FOOD TRUCKS & DRINKS
- FACE PAINTING, BOUNCE HOUSE, OBSTACLE COURSE, DJ, GAMES, PET ADOPTIONS, & MORE!!

TACO FEST AT A TACO FIESTA

SATURDAY, MAY 3
4:00PM - 9:00PM

TACO VENDORS, BEST TACO CONTEST, LIVE MUSIC & ENTERTAINMENT

SEMINOLE CITY PARK
7464 RIDGE ROAD SEMINOLE, FL 33772

FUN AND Games

Sudoku #1

2		5	7					3
8		7	4				5	2
		4	9	5	2	1	7	8
	7	8				5		9
9	5			1	7	6	3	4
	4	6	5	2	9	7	8	1
		3		9	5	8		7
	2		1		8	3	4	
	8	1	3				9	

EASTER WORDSEARCH



- basket
- candy
- egg
- hop
- bunny
- rabbit
- hunt
- treat
- find
- spring
- grass
- bow
- treasure
- chocolate
- Easter

FIND THE DIFFERENCES

Find seven differences in these two pictures.

